

What temperature range is safe for storing items in Space Bag® products?

Space Bag® should be stored in areas where temperatures will not exceed 55°C or fall below -18°C.

Can I re-use my Space Bag®?

Yes.

How often should items be removed?


Every six months, remove items to air out and restore loft by fluffing or tumbling in dryer set on 'cool'.

If you need to store damp items whilst travelling, do not keep them in the bag for more than 24 hours.

Will moving a sealed Space Bag® from one location to another affect the seal?

The closure system is sturdy but it can be jarred or flexed open with rough handling. To ensure the Space Bag® seal holds, carry the bag vertically (zipper up) to minimise stress on the closure system. Hold at, or near the middle of the bag. Store the bag vertically (zipper up) or lying flat. Do not hold or carry the sealed bag near the zipper.

PRECAUTIONS

1. Keep out of the reach of children 
2. Do not puncture bag
**Articles with metal/sharp edges could result in pin holes*
3. Do not use to store food, leather or items made of animal fur
4. Down filled items should only be reduced to 50% as further compression can damage down feathers
5. **Items should be completely dry before packing**
** If travelling short distances and wishing to carry soiled, damp clothing, ensure they are not left in the Space Bag® travel bag for more than 24 hours*
6. **Thoroughly air items that have been dry cleaned before packing**
7. Do not store bag near sharp objects, heat sources such as on top shelves of closets near light bulbs or in temperatures above 55°C or below -18°C

SPACE BAG® and the SPACE BAG® logo are registered trademarks of S.C. Johnson and Son, Inc.

Made in China

Distributed by:
McGloins-Supertex Pty Ltd
Unit 7, 7 Meridian Place, Bella Vista NSW 2153, Australia
www.mcgloins-supertex.com.au

SBRUTV V5.1609



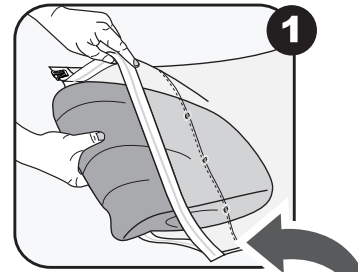
www.spacebag.com.au

ROLL-UP TRAVEL BAG INSTRUCTIONS

Please read these instructions before using your Space Bag®.

For a demonstration video, tip & suggestions - please go to: <http://goo.gl/eFkncJ>

For additional information on other space saving solutions: www.spacebag.com.au

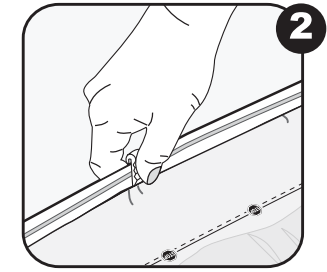


Pack your clothing & gear - any items you want to store and protect.

Items should be completely dry before packing.

Do not pack past the **STOP** line.

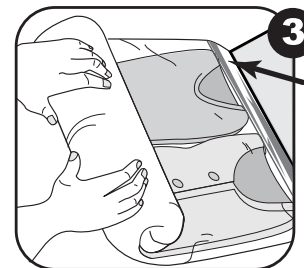
Push out excess air.



Ensure the zipper is as flat as possible. Firmly pinch the slider together between thumb and forefinger.

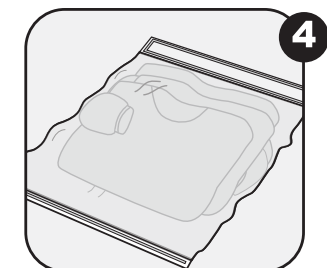
Slowly move the slider across from one end of bag, beginning and ending at the bubble stop.

Repeat this step in the opposite direction at least two times to seal the bag.



INVISIBLE ONE-WAY VALVE

Starting at the zipper end, roll bag towards the bottom, expelling air and flattening compressible items. Air escapes through the specially designed, invisible, flat one-way valve.

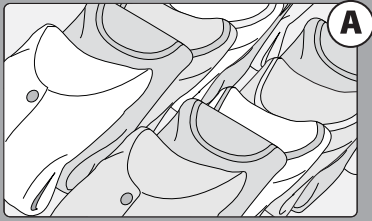


Store in your carry-on, suitcase, gym bag or back pack.

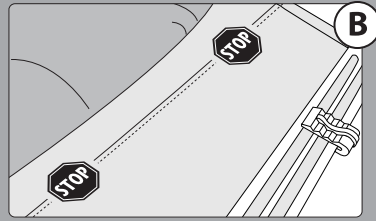
NOTE: If bag reinflates, repeat steps 1 through to 3.

If the slider comes off, it can be easily reinserted into the zipper.

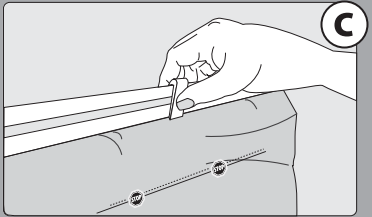
PACKING RECOMMENDATIONS & TIPS



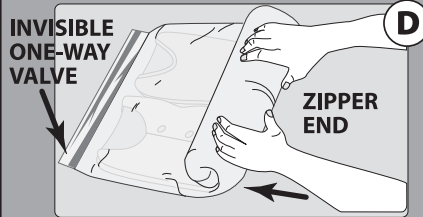
* For best compression results, fold clothes & bedding as neatly and flat as possible. Layer clothes in rows, bulkier items first. Ensure the bag is packed evenly so when compressed, it will remain flat and level and stack efficiently.



Do not pack past the **STOP** line. Overfilled bags may not seal properly.



- Do not hold or carry the bag by the zipper
- To re-open, gently pull apart from centre of zipper



Roll only **AWAY** from zipper end to expel air which escapes through the 'one-way' valve at opposite end of the travel bag

Zipper Sealing Hints

To ensure an air tight seal, move the slider to one edge, touching the raised 'bubble stop'. Firmly pinch the slider between your thumb and forefinger. Slowly slide it across the zipper from one end of bag to the opposite 'bubble stop'. Repeat this step at least twice in each direction. Check the seal to ensure there are no openings. A gentle tug on the zipper will show if the bag is sealed. Sharp clothing zippers or wire hangers will pierce the bag. Remember to place zippers inside clothing when folding.

Baby clothes or manchester, can unstick the seal in the Space Bag®. This can be due to the oils that are present in the fabrics. If this does occur, simply wipe the seal with a clean cloth or paper towel and re-seal.

Do not pack past the "STOP" line. Overfilled bags may not seal properly. Overfilling can place too much pressure on the seal and could cause it to open.

For further advice on Space Bag®, please refer to the 'FAQ' section following.

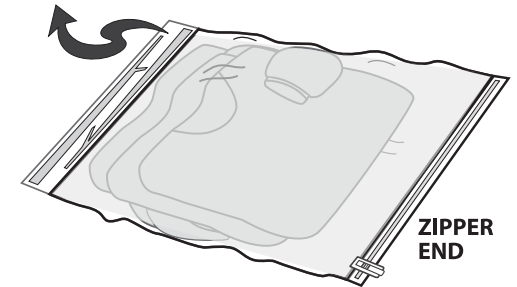
FREQUENTLY ASKED QUESTIONS

What are the advantages of roll-up travel bags?

You can pack more clothing items in your suitcase by compressing them. No vacuum cleaner required. Travel bags may also be placed 'rolled up' or flat in the suitcase for better and efficient packing. They are ideal for separating soiled clothing from your clean or newly purchased holiday items.

Why won't I need a vacuum cleaner with this bag?

The bag has been designed with an invisible, flat, one-way valve through which air is expelled when the bag is rolled, pushing the air out and not allowing the air back in.



What makes Space Bag® watertight and air tight?

Three design features work together to create the airtight seal and maintain the vacuum in Space Bag®.

The specially devised one-way air valve allows expulsion of air whilst preventing it from re-entering the bag.

Space Bag® is made from bi-axial layers of polyethylene and nylon, which air and water cannot permeate. These give it the strength, flexibility and durability to hold the vacuum seal.

What is the most common use for the Space Bag® roll-up travel bag?

Holiday clothes and seasonal wear like fluffy ski jackets, jumpers and shawls as well as accumulated dirty laundry.

What items cannot be stored in Space Bag®?

Do not use Space Bag® to store food items or items made of leather or animal fur. If you have questions regarding the effects of vacuum-storage on a specific item, check with your Space Bag® supplier.

All items should be completely dry before packing into Space Bag®. If you need to store damp items whilst travelling, do not keep them in the bag for more than 24 hours.

Precaution: Feather, down and wool-filled items should only be compressed 50% as further compression can damage feathers and clump wool fibres.

Continued overleaf