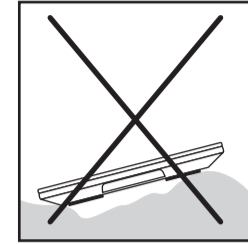
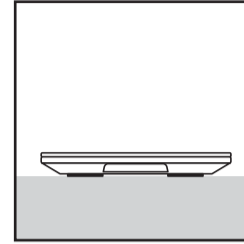
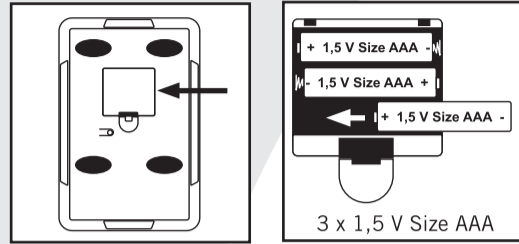
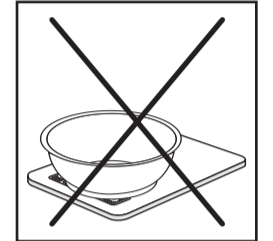
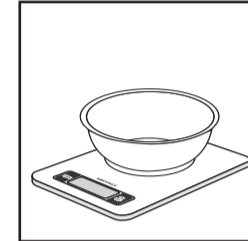
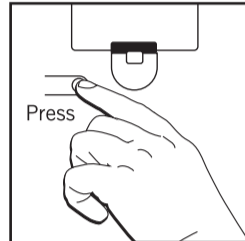
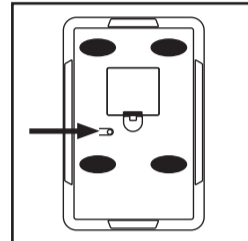
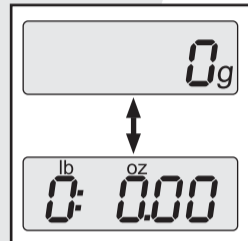


OPERATION



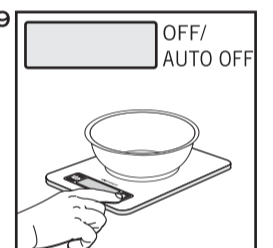
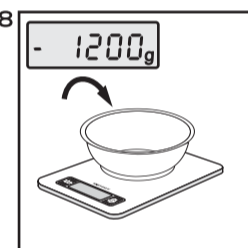
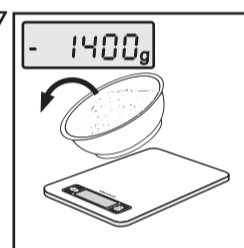
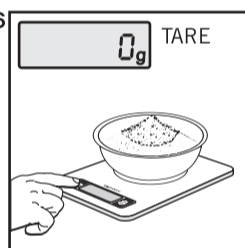
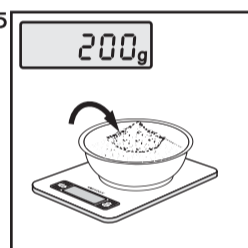
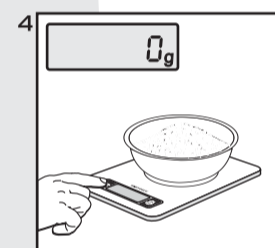
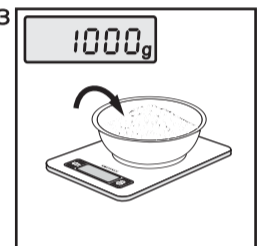
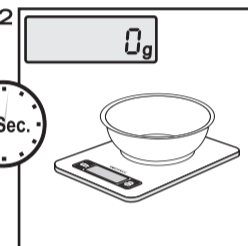
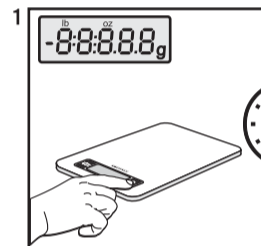
CONVERT kg/st/lb



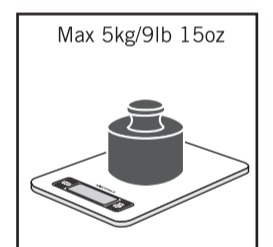
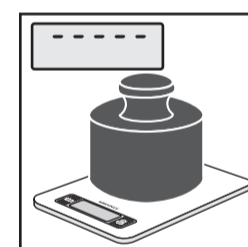
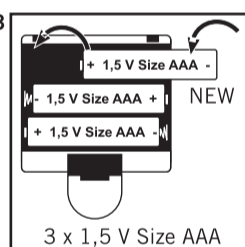
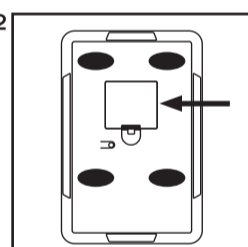
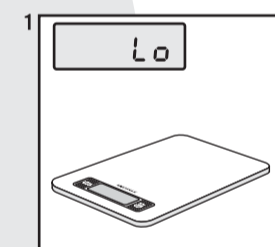
WEIGHING & ADDING



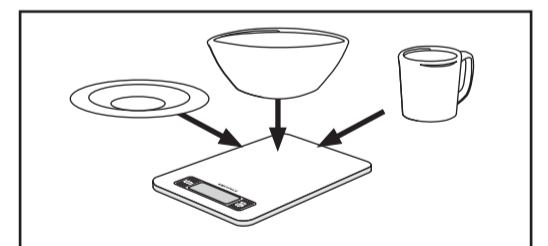
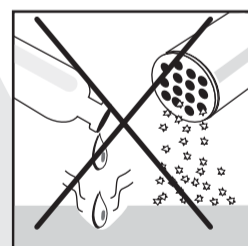
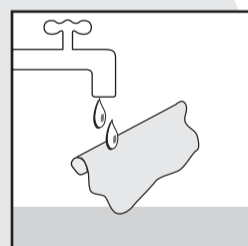
Sensor-Touch
Touch keys only lightly!



MESSAGES




CLEANING & MAINTENANCE




GUARANTEE: For 5 years as of the date of purchase, Soehnle guarantees against all manufacturing defects or faults. In the event of a guarantee claim please take the scale back to the retailer with the receipt of purchase for a replacement or refund.

EC Conformity
This device complies with the applicable EC Directive 2004/108/EC (www.soehnle.com).

BATTERY DISPOSAL EC DIRECTIVE 2008/12/EC: Batteries are not a part of your regular household waste. You must return batteries to your municipality's public collection or wherever batteries of the respective type are being sold. Batteries containing hazardous materials are marked with these symbols:

 Pb = Battery contains lead
Cd = Battery contains cadmium
Hg = Battery contains mercury

 **DISPOSAL OF ELECTRIC & ELECTRONIC DEVICES EC DIRECTIVE 2002/96/EC:** This product is not to be treated as regular household waste but must be returned to a collection point for recycling electric and electronic devices. Further information is available from your municipality, your municipality's waste disposal services or the retailer where you purchased your product.